



















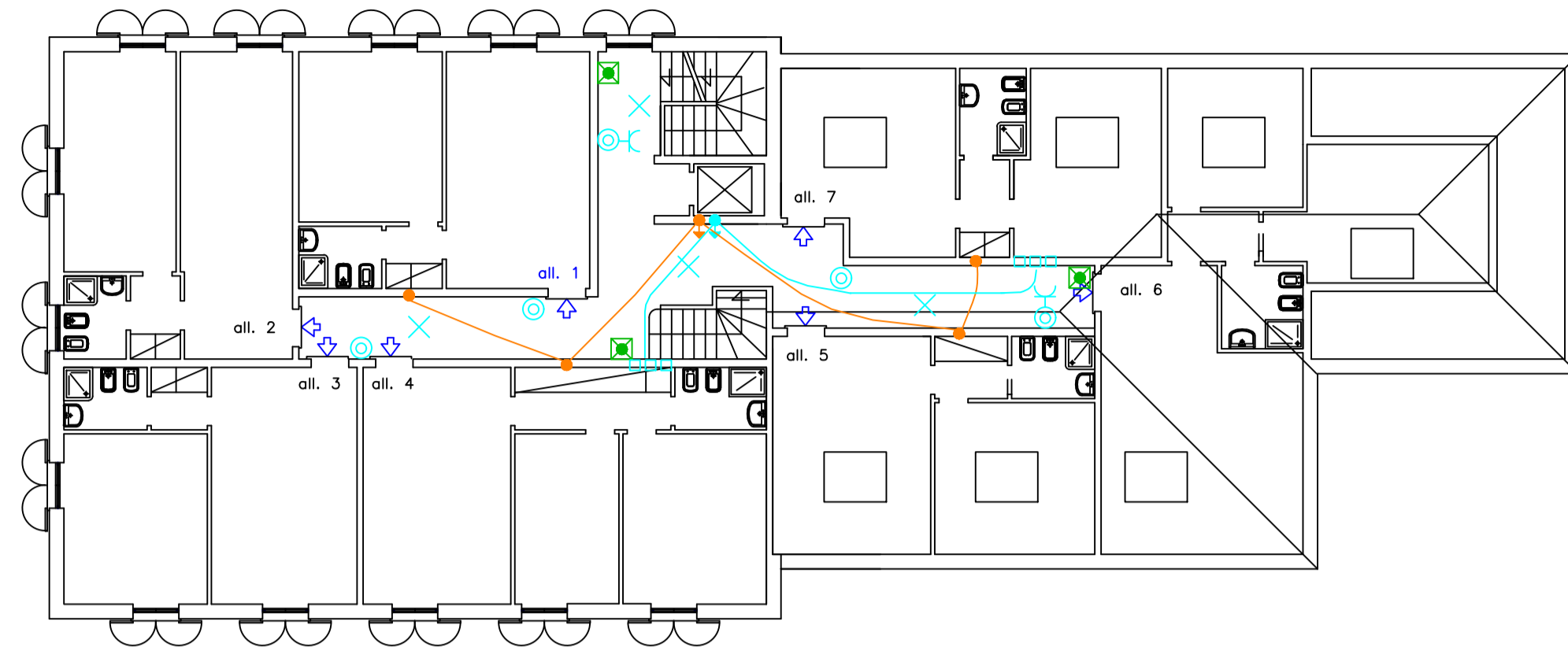
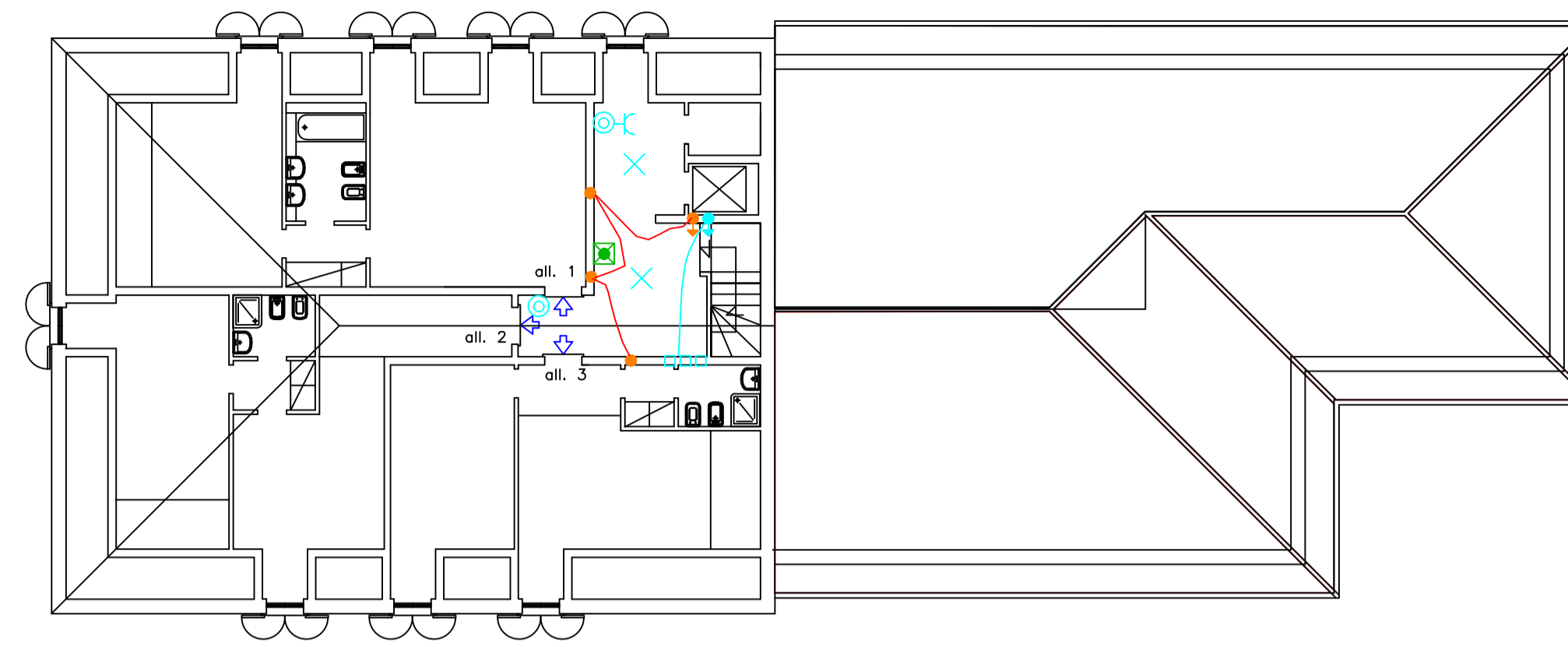


LEGENDA SIMBOLI ELETTRICI

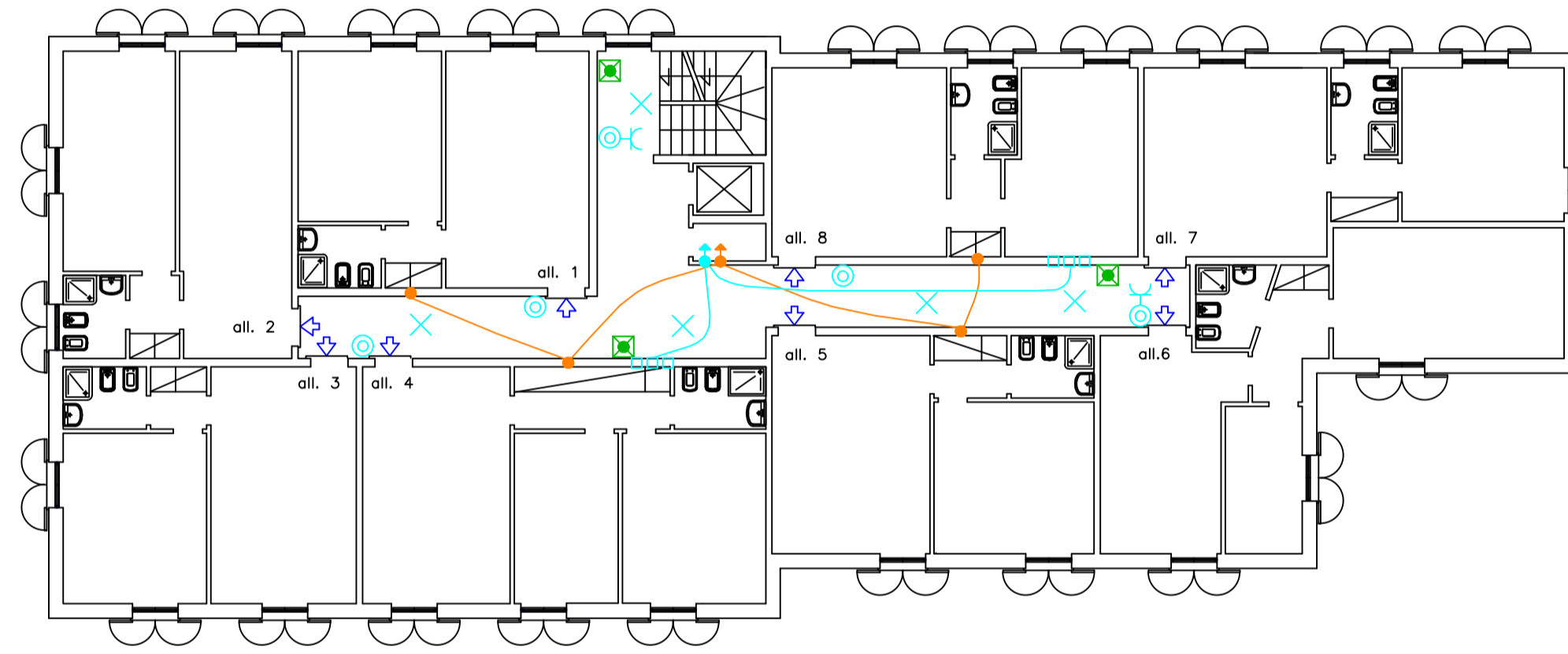
-  punto presa tv
-  punto presa dati
-  sensori PIR per comando luci automatico
-  punto luce generico
-  punto presa
-  punto tirante allarme wc (h ≥ 25 cm)
-  punto luce emergenza autoalimentata (aut. 1 h) S.E.
-  quadro elettrico
-  pulsante comando luce (con spia)
-  interruttore comando luce
-  montanti elettrici
-  scatole derivazione
-  luce contabilizzazione condominiale
-  pannelli ottico-acustici allarme incendio
-  rivelatori incendio
-  pulsante allarme incendio
-  diffusori allarme sonoro
-  dispersore intenzionale di terra
-  ventilatori
-  foro areazione



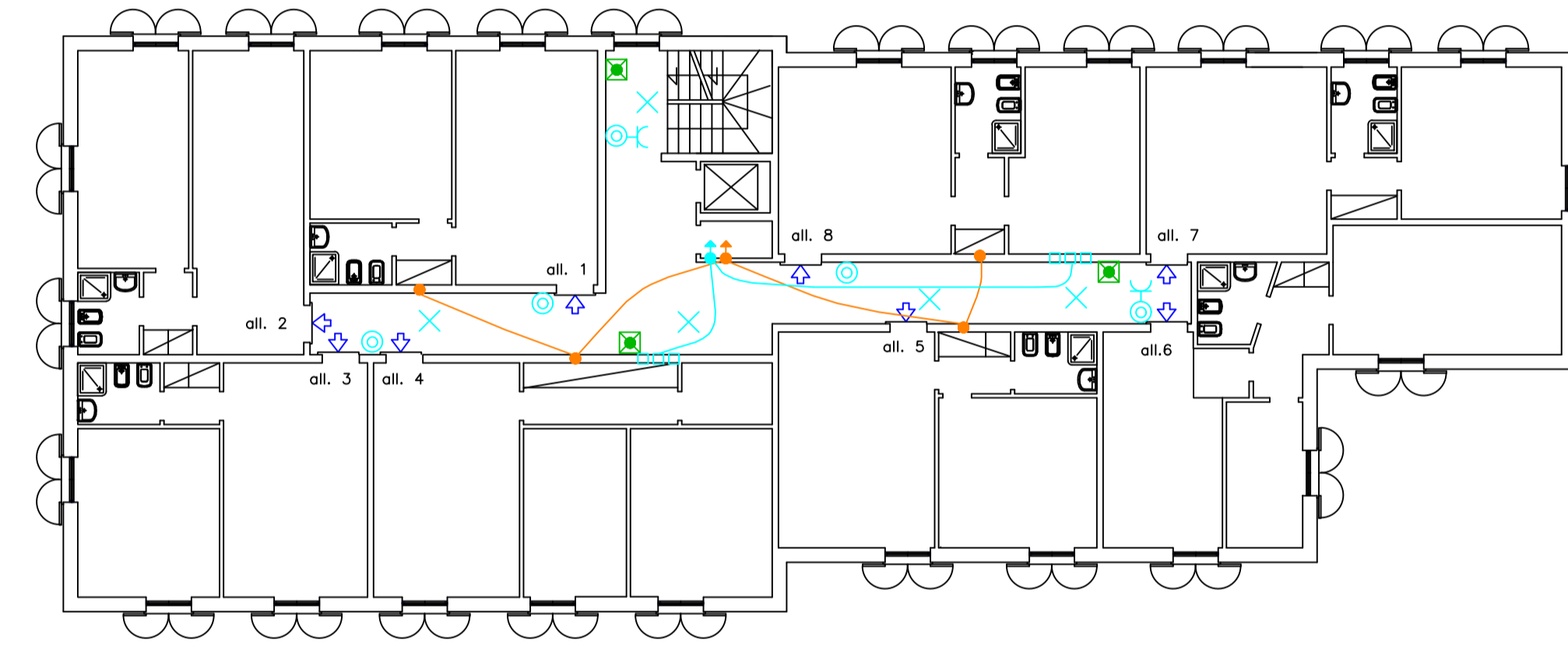
Pianta piano quarto



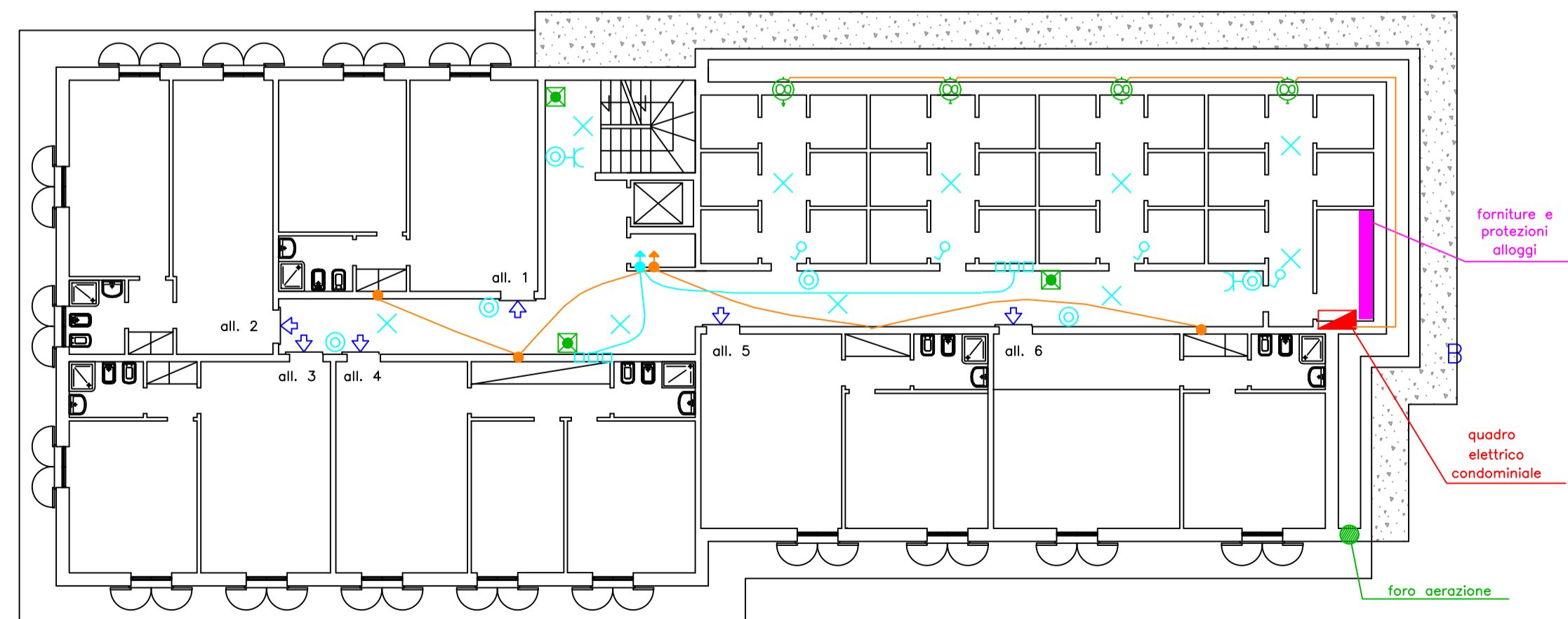
Pianta piano mansardato



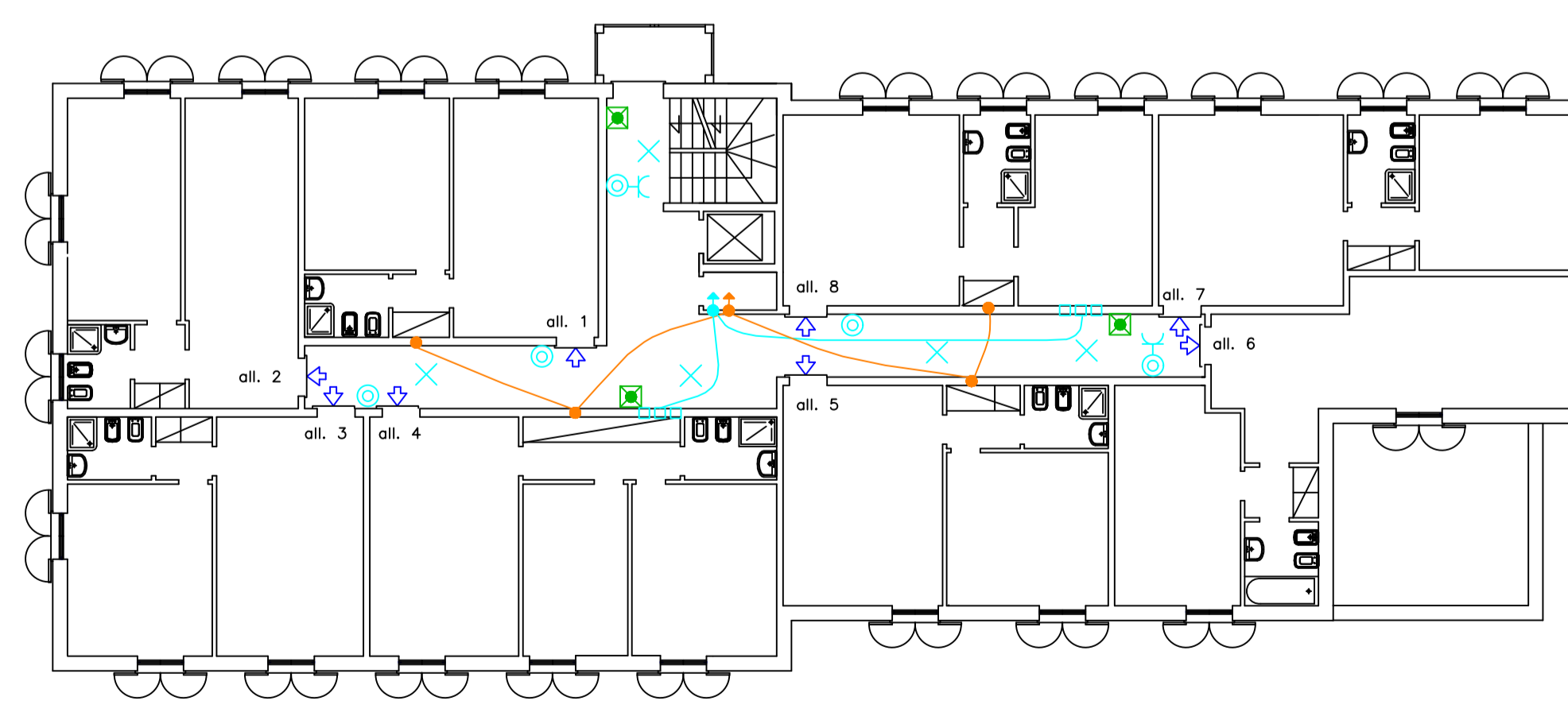
Pianta piano secondo



Pianta piano terzo



Pianta piano terra



Pianta piano primo

Si attesta la corrispondenza degli elaborati a quelli già presenti ed esaminati della Conferenza Deliberante del 06/05/2018, fatto eccezione per quanto espressamente richiesto con DGR 285/2018 e con i pareri formulati dalla ASL 1 e dal comando dei Vigili del Fuoco durante la Conferenza sopra citata

PROVINCIA DI IMPERIA
COMUNE DI SANREMO

PROGETTO PRELIMINARE ELETTRICO

PROGETTO DI TRASFORMAZIONE IN VARIANTE AL P.R.G.
EX CONVENTO SUORE CAPPUCCINE DII MADRE RUBATTO
SITO IN PIAZZA SAN BERNARDO – SANREMO

PIAZZA SAN BERNARDO – SANREMO

	MPI MORONI PENNA INGEGNERI STUDIO TECNICO ASSOCIATO -- Via Palazzo, 34 - 18038 Sanremo (IM) -- Tel.: 0184-578002 Fax: 0184-578002 -- WEB: www.moronipenna.com - E-MAIL: info@moronipenna.com C.F. & P. I.V.A.: 013 067 300 84
	ELETTRICO – "PROGETTO PRELIMINARE"

PROGETTISTI: Dott. Ing. Gian Luca MORONI	DISEGNATORE: A.P.	CONTROLLATORE: G.M.
COMMITTENTE: Soc. GEORGIA S.R.L. con sede in ACQUI TERME (AL) Via Morandi, 2 C.F.: 02130710060	LOCALITA' – LAVORO: SANREMO (IM)	COMMESSA RIF.num/anno 47/2012 ULTIMA REVISIONE REV03 25/06/2018
IMPIANTO: ELETTRICO – PLANIMETRIE IMPIANTO ELETTRICO EDIFICIO CIVILE ABITAZIONE PIANI ABITATIVI (parti condominiali)	TAVOLA N.: ELE_02_Edificio	SCALA: ----- IL PROGETTISTA:
NOME DEL FILE: Condominio.dwg	FILE PTC: NESSUNO	COPIA AD USO