

COMUNE DI SANREMO
PROVINCIA DI IMPERIA

PROGETTO di trasformazione in variante al P.R.G.
ex convento Suore Cappuccine di Madre Rubatto
sito in p.zza San Bernardo – SANREMO

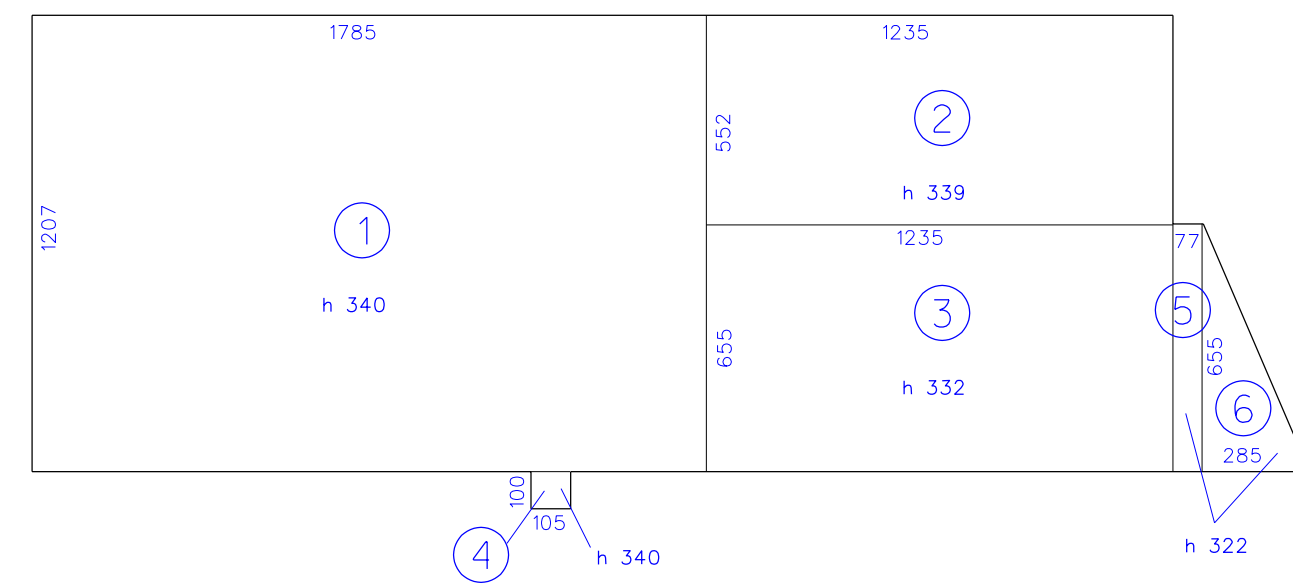
RICHIEDENTE: Soc. GEORGIA S.r.l.
con sede in AQUI TERME (AL)
Via Morandi, 2
C.F. : 02130710060

PROGETTISTI: Arch. SERGIO MAIGA
Arch. MICOL MAIGA
Arch. SOFIA TONEGUTTI
Via Gioberti, 3 – SANREMO (IM)
TEL. 0184535854

data 19.04.2012 scala 1:200 TAVOLA

CALCOLO VOLUME
stato di fatto

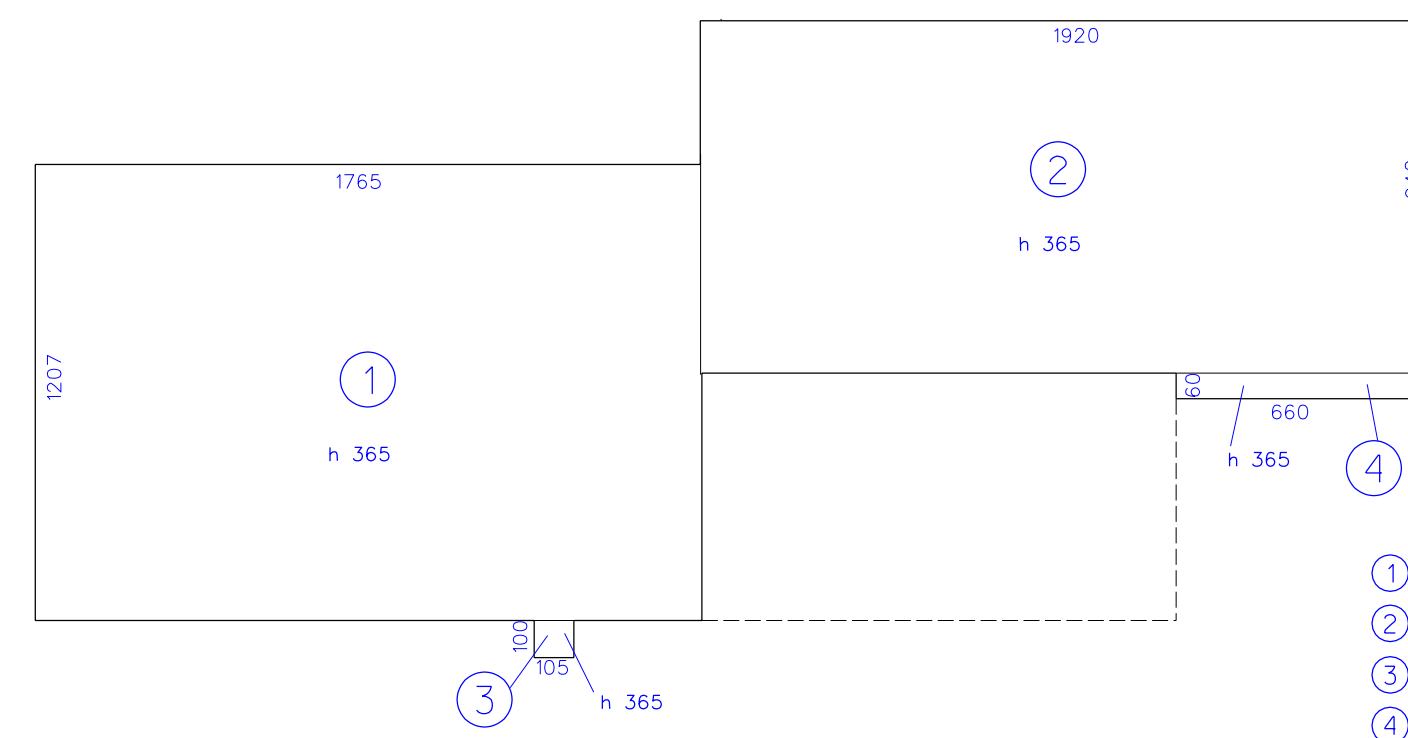
7/b



Piano terra

Calcolo volume
Piano terra

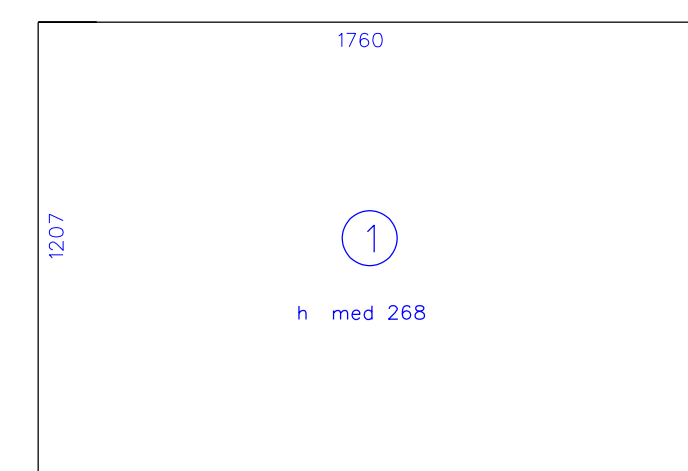
①	17.85 mt x 12.07 mt x 3.40 mt =	732.53 mc
②	12.35 mt x 5.52 mt x 3.39 mt =	231.10 mc
③	12.35 mt x 6.55 mt x 3.32 mt =	268.56 mc
④	1.05 mt x 1.00 mt x 3.40 mt =	3.57 mc
⑤	0.77 mt x 6.55 mt x 3.22 mt =	16.24 mc
⑥	(2.85 mt x 6.55 mt) / 2 x 3.22 mt =	30.05 mc
TOTALE =		1282.05 mc



Piano secondo

Calcolo volume
Piano secondo

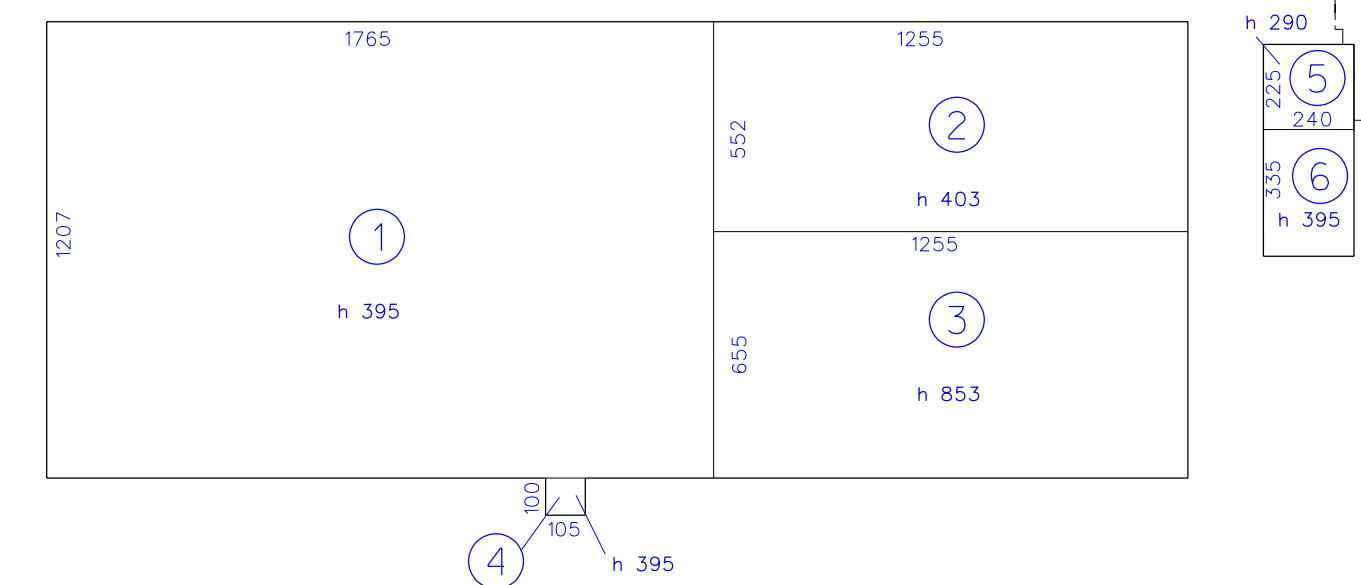
①	17.65 mt x 12.07 mt x 3.65 mt =	777.58 mc
②	19.20 mt x 9.40 mt x 4.65 mt =	839.23 mc
③	1.05 mt x 1.00 mt x 3.65 mt =	3.83 mc
④	0.60 mt x 6.60 mt x 3.65 mt =	14.45 mc
TOTALE =		1635.09 mc



Piano quarto

Calcolo volume
Piano quarto

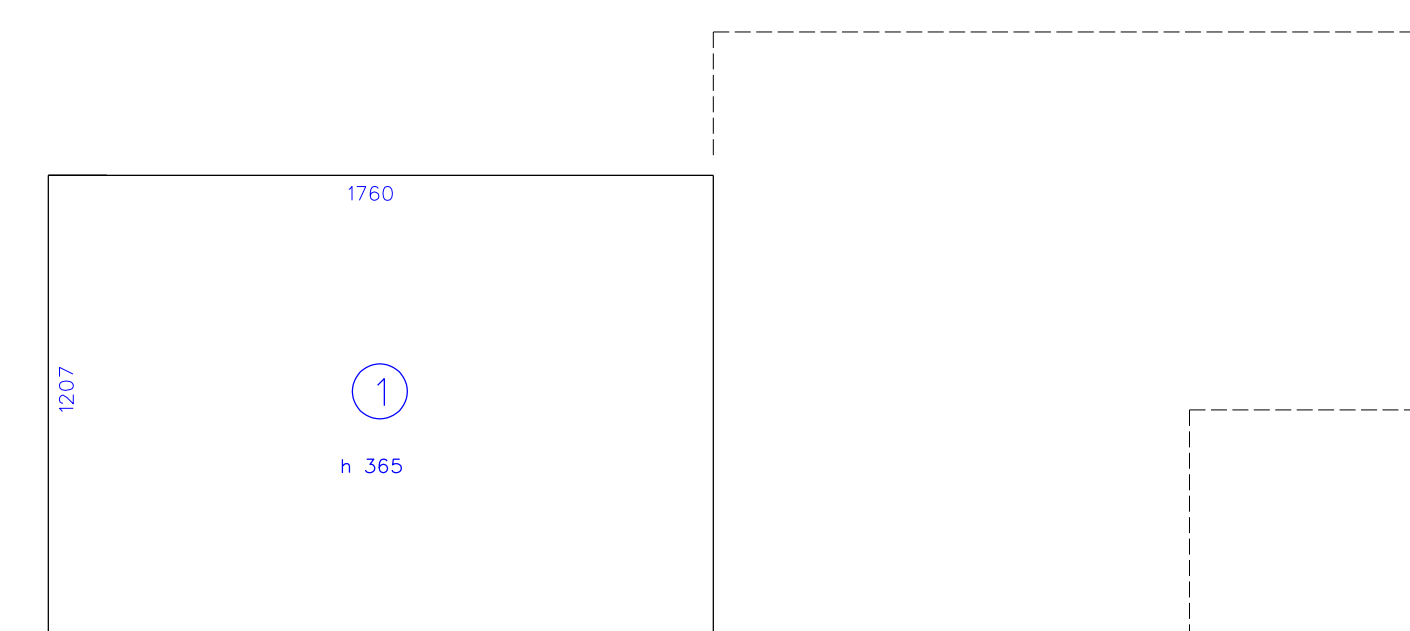
①	17.60 mt x 12.07 mt x 2.68 mt =	569.31 mc
TOTALE =		569.31 mc



Piano primo

Calcolo volume
Piano primo

①	17.65 mt x 12.07 mt x 3.95 mt =	841.49 mc
②	12.55 mt x 5.52 mt x 4.03 mt =	279.18 mc
③	12.55 mt x 6.55 mt x 8.53 mt =	701.19 mc
④	1.05 mt x 1.00 mt x 3.95 mt =	4.15 mc
⑤	2.40 mt x 2.55 mt x 2.90 mt =	5.51 mc
⑥	2.40 mt x 3.35 mt x 3.95 mt =	31.76 mc
TOTALE =		1863.28 mc

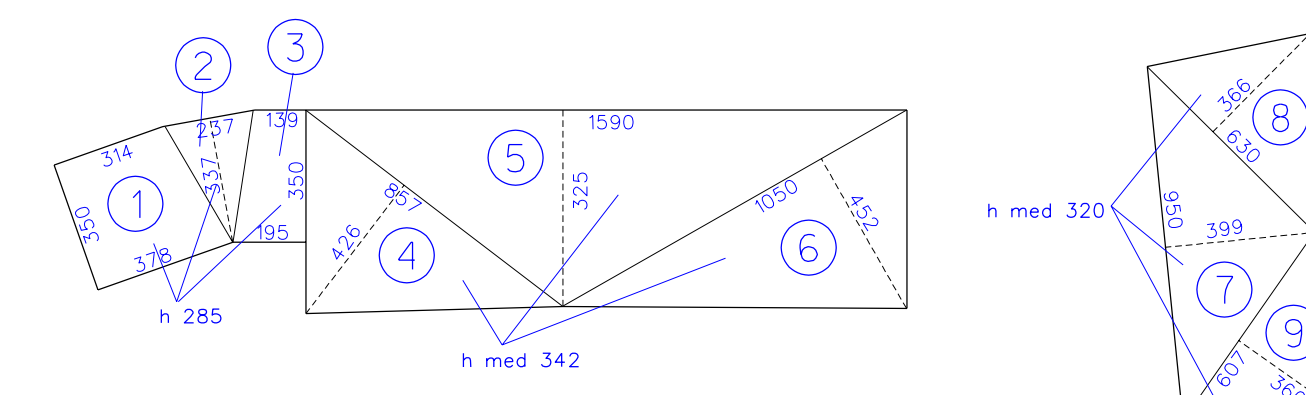


Piano terzo

Calcolo volume
Piano terzo

①	17.60 mt x 12.07 mt x 3.65 mt =	775.38 mc
TOTALE =		775.38 mc

FABBRICATO B FABBRICATO A



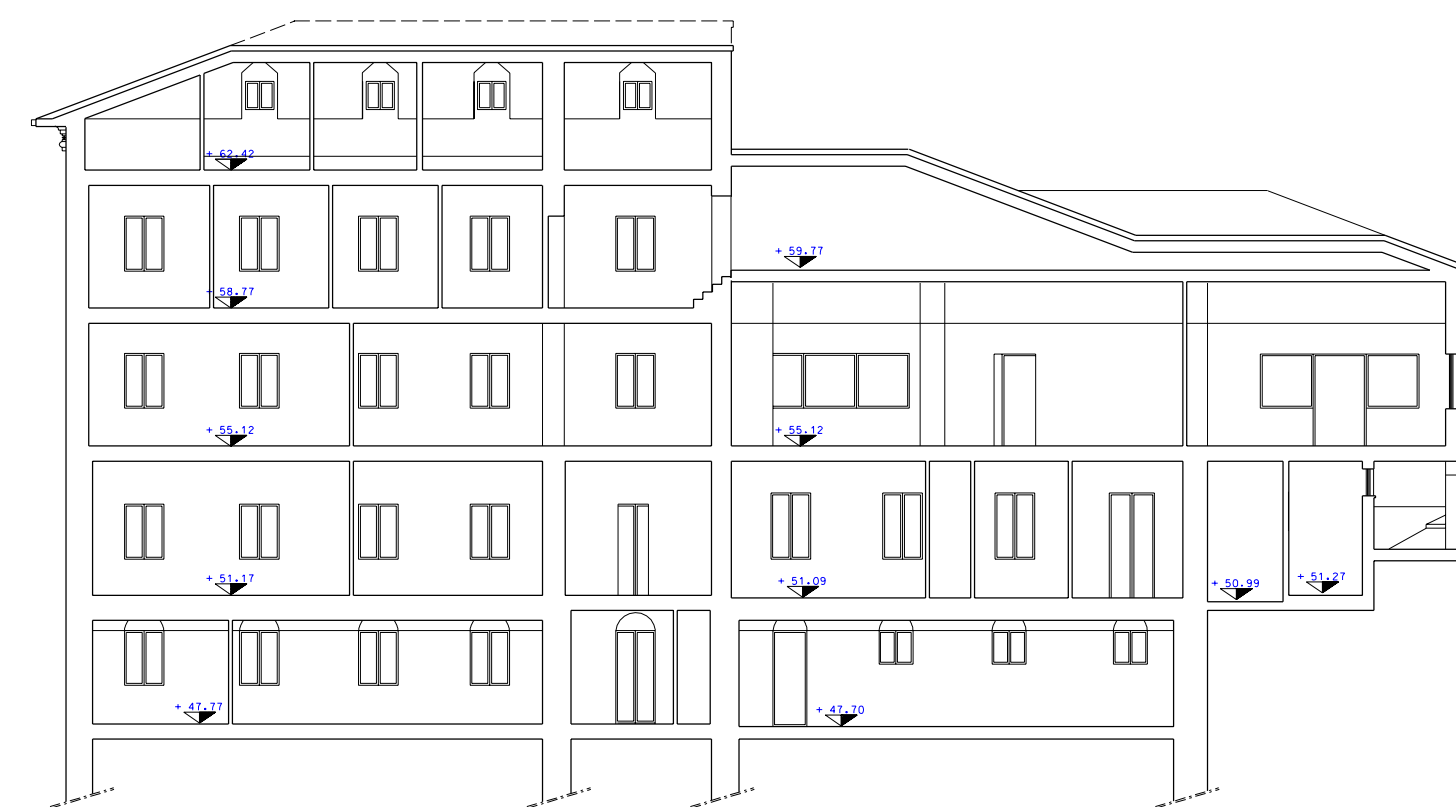
Piano terra

Calcolo volume
Piano terra
FABBRICATO B

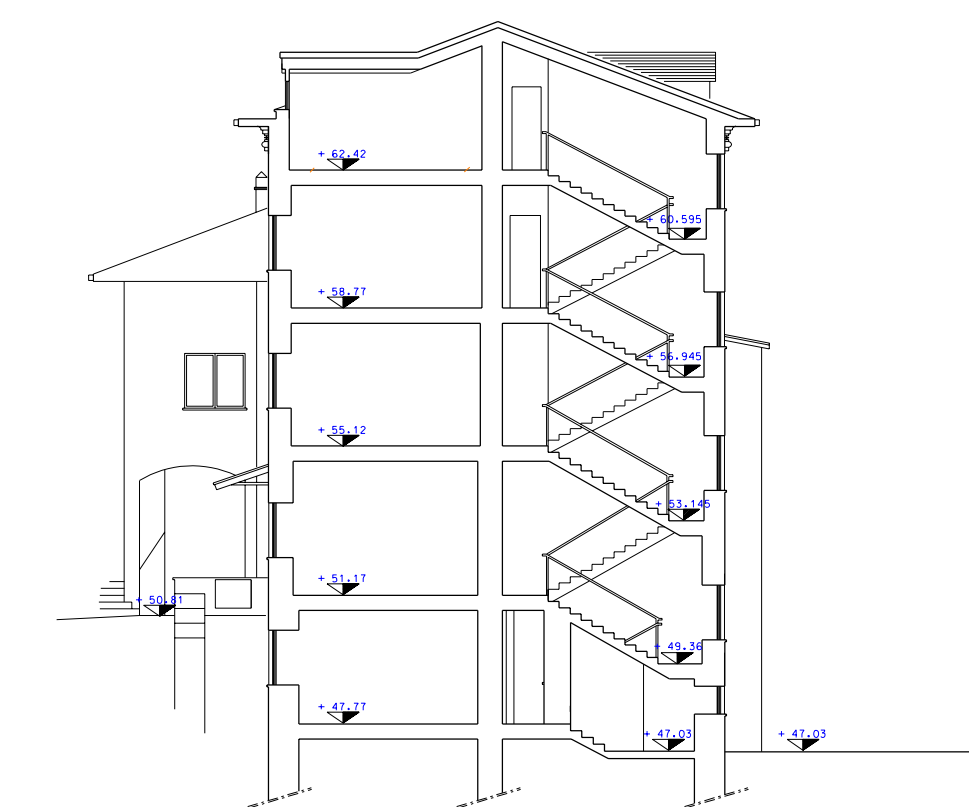
①	((3.14 mt + 3.78 mt) / 2) x 3.50 mt x 2.85 =	34.51 mc
②	((2.37 mt x 3.37 mt) / 2) x 2.85 mt =	8.18 mc
③	((1.39 mt + 1.95 mt) / 2) x 3.50 mt x 2.85 =	16.66 mc
④	((8.57 mt x 4.26 mt) / 2) x 3.42 mt =	62.43 mc
⑤	((15.90 mt x 3.25 mt) / 2) x 3.42 mt =	88.36 mc
⑥	((10.50 mt x 4.25 mt) / 2) x 3.42 mt =	81.15 mc
TOTALE =		291.29 mc

FABBRICATO A

⑦	((9.50 mt x 3.99 mt) / 2) x 3.20 mt =	60.65 mc
⑧	((6.30 mt x 3.66 mt) / 2) x 3.20 mt =	36.89 mc
⑨	((6.07 mt x 3.66 mt) / 2) x 3.20 mt =	35.55 mc
TOTALE =		133.09 mc



Sezione B B



Sezione A A

TOTALE VOLUME EDIFICIO PRINCIPALE: (1282.05 mc + 1863.28 mc + 1635.09 mc + 775.38 mc + 569.31 mc) = 6125.11 mc
 TOTALE VOLUME FABBRICATI A e B: (291.29 mc + 133.09 mc) = 424.38 mc
 VOLUME COMPLESSIVO: (6125.11 mc + 424.38 mc) = 6549.49 mc