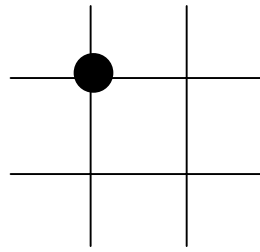
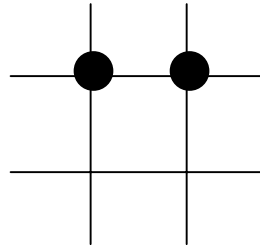


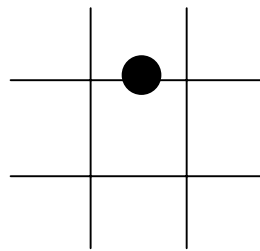
		0		
1-18	1ère 12	1	2	3
		4	5	6
IMPAIR		7	8	9
◇	2ème 12	10	11	12
		13	14	15
◆	2ème 12	16	17	18
		19	20	21
PAIR	3ème 12	22	23	24
		25	26	27
19-36	3ème 12	28	29	30
		31	32	33
		34	35	36
		2to 1	2to 1	2to 1



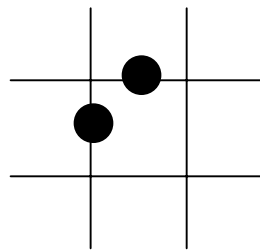
8 = 1 carrè



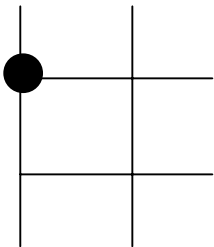
16 = 2 carrè



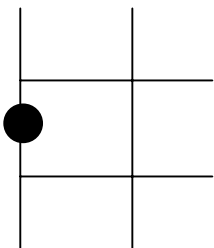
17 = 1 cavallo



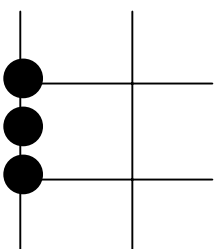
34 = 2 cavalli



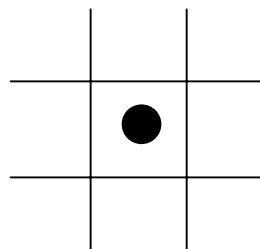
5 = 1 sestina



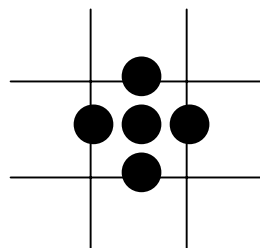
11 = 1 terzina



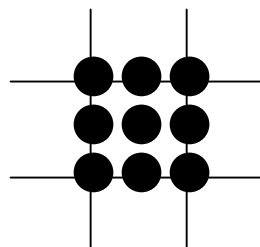
21 = 1 terzina 11
2 sestine 10



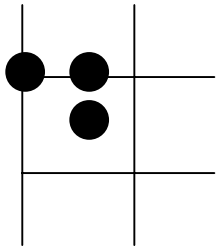
35 = 1 pieno



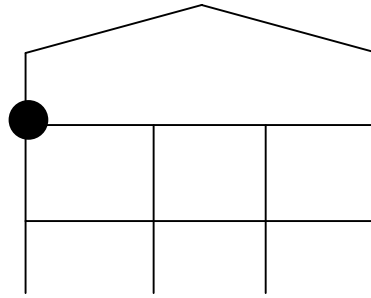
103 = 1 pieno 35
4 cavalli 68



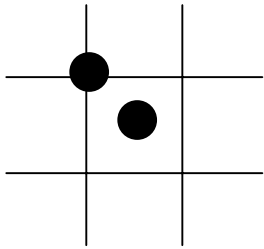
135 = 1 pieno 35
4 cavalli 68
4 carrè 32



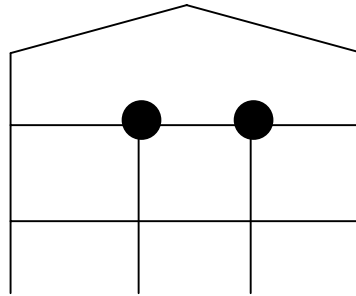
57 = 1 pieno 35
1 cavallo 17
1 sestina 5



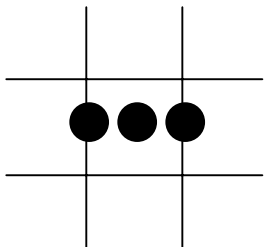
8 = quattro primi



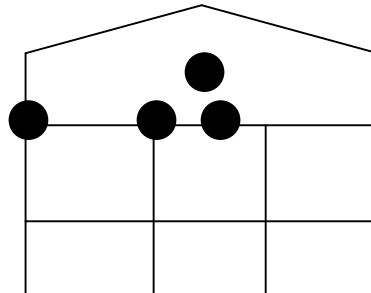
43 = 1 pieno 35
1 carrè 8



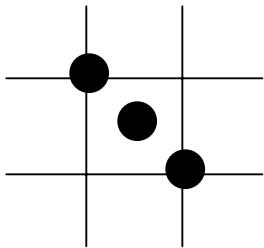
22 = 2 terzine



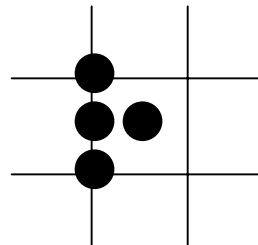
69 = 1 pieno 35
2 cavalli 34



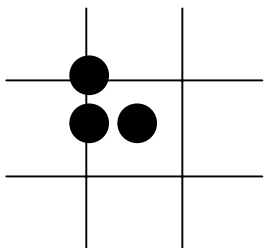
71 = 1 pieno 35
1 cavallo 17
1 terzina 11
1 quattro primi 8



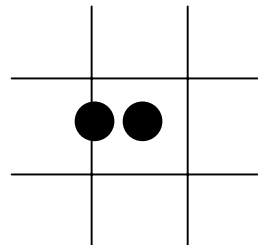
51 = 1 pieno 35
2 carrè 16



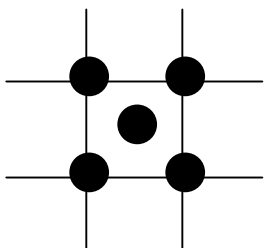
68 = 1 pieno 35
1 cavallo 17
2 carrè 16



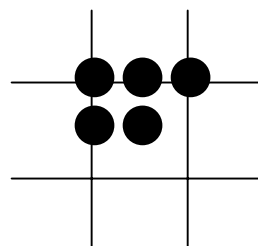
60 = 1 pieno 35
1 cavallo 17
1 carrè 8



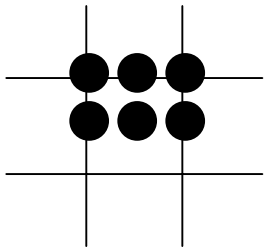
52 = 1 pieno 35
1 cavallo 17



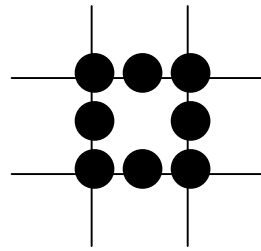
67 = 1 pieno 35
4 carrè 32



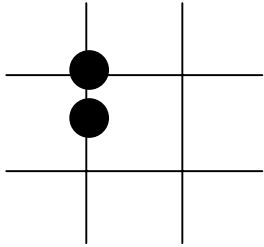
85 = 1 pieno 35
2 cavalli 34
2 carrè 16



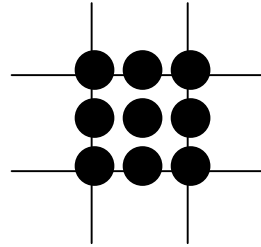
102 = 1 pieno 35
 3 cavalli 51
 2 carrè 16



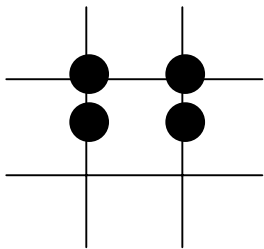
100 = 4 cavalli 68
 4 carrè 32



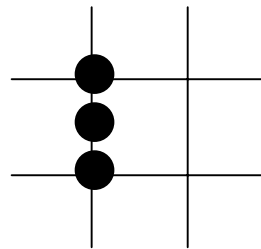
25 = 1 cavallo 17
 1 carrè 8



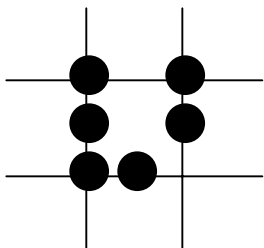
135 = 1 pieno 35
 4 cavalli 68
 4 carrè 32



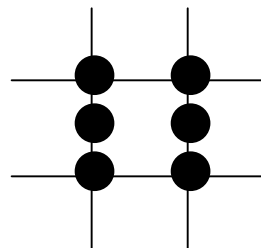
50 = 2 cavalli 34
 2 carrè 16



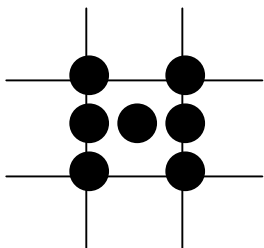
33 = 1 cavallo 17
 2 carrè 16



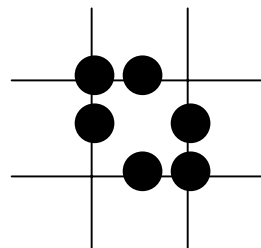
75 = 3 cavalli 51
 3 carrè 24



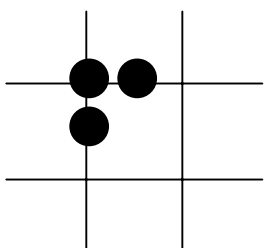
66 = 2 cavalli 34
 2 carrè 32



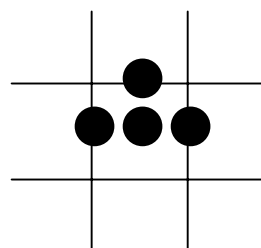
101 = 1 pieno 35
 2 cavalli 34
 4 carrè 32



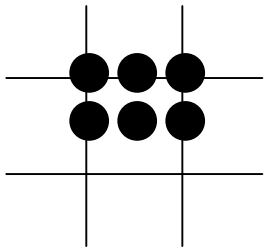
84 = 4 cavalli 68
 2 carrè 16



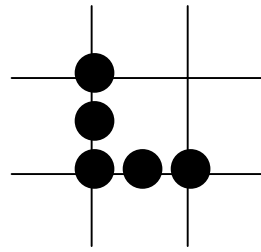
42 = 2 cavalli 34
 1 carrè 8



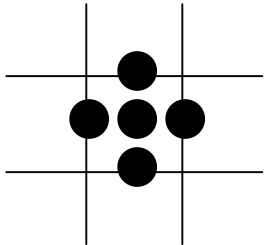
86 = 1 pieno 35
 3 cavalli 51



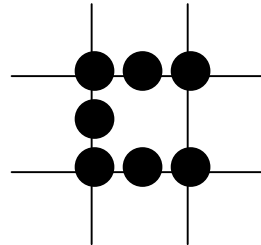
102 = 1 pieno 35
 3 cavalli 51
 2 carrè 16



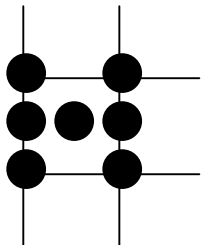
58 = 2 cavalli 34
 3 carrè 24



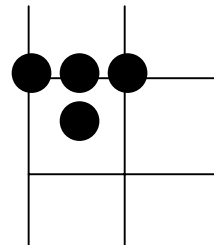
103 = 1 pieno 35
 4 cavalli 68



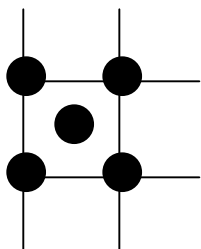
83 = 3 cavalli 51
 4 carrè 32



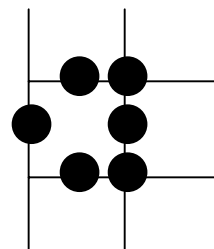
89 = 1 pieno 35
 1 cavallo 17
 2 carrè 16
 1 terzina 11
 2 sestine 10



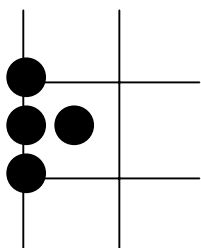
65 = 1 pieno 35
 1 cavallo 17
 1 carrè 8
 1 sestina 5



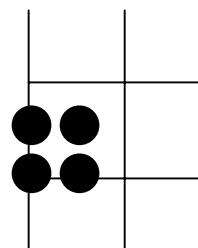
61 = 1 pieno 35
 2 carrè 16
 2 sestine 10



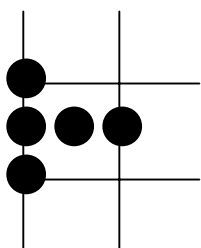
78 = 3 cavalli 51
 2 carrè 16
 1 terzina 11



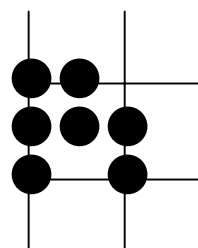
56 = 1 pieno 35
 1 terzina 11
 2 sestine 10



68 = 1 pieno 35
 1 cavallo 17
 1 terzina 11
 1 sestina 5



73 = 1 pieno 35
 1 cavallo 17
 1 terzina 11
 2 sestine 10



98 = 1 pieno 35
 2 cavalli 34
 1 carrè 8
 1 terzina 11
 2 sestine 10